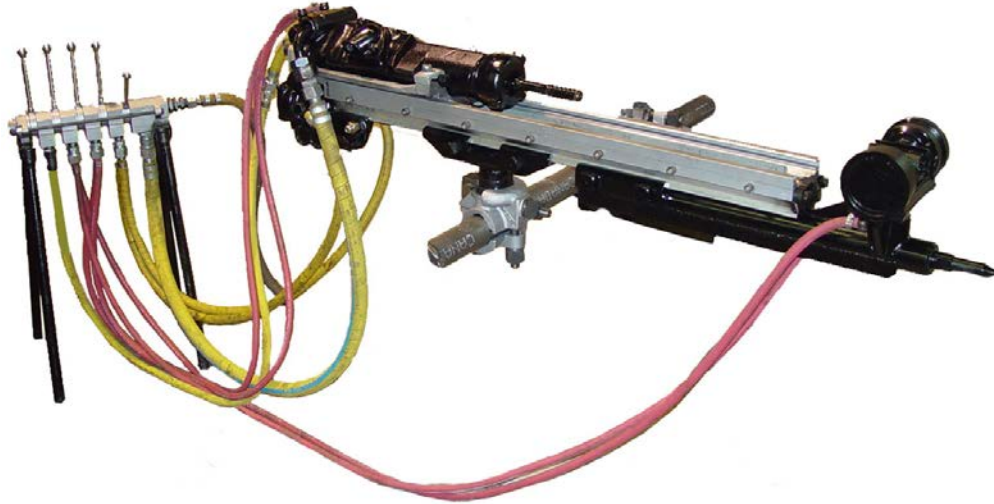


BBC120 Long-hole Drill Set-up



BBC120 Rifle Bar Rotation Rock Drill

Robust and durable pneumatic rock drill for long-hole drilling, benching, ditching and trenching with light extension drill rod equipment. Reversible rifle bar rotation with disengagement mechanism.

Specifications

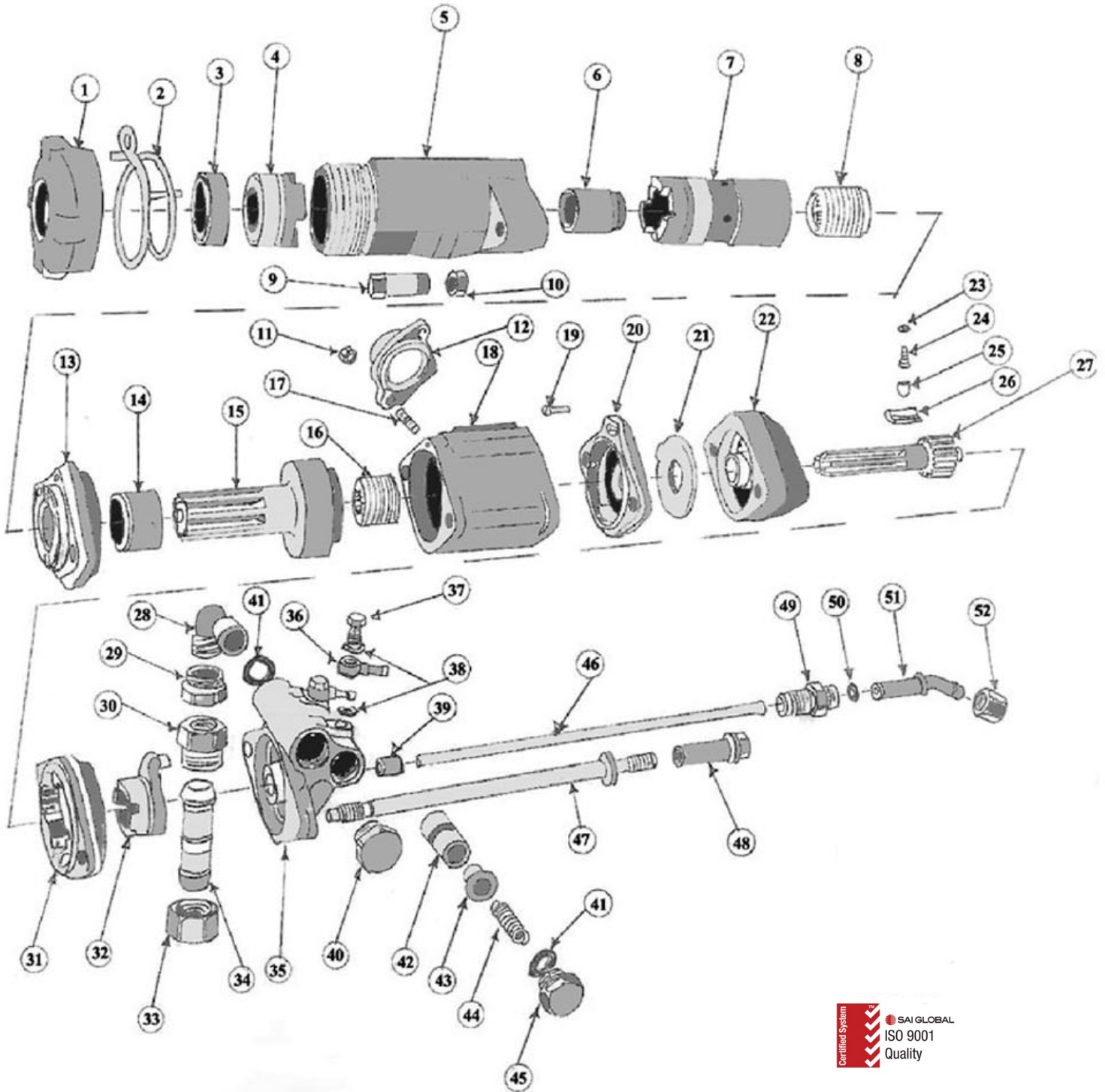
Weight of drill	152 lb	69 kg
Length of drill	30.5 in	780 mm
Piston Bore	4.75 in	120 mm
Stroke Length	2.5625 in	65 mm
Impact Rate	1900 blows per minute	
Impact Power	9.6 Hp	7.2 kW
Rotation Speed	0 to 180 revolutions per minute	
Maximum Torque	665 lb force ft	900 Nm
Working Air Pressure	Nominal 85 psi Optimal 100 psi	Nominal 6 Bar Optimal 7 Bar
Maximum Air Consumption	328 cfm @ 85 psi	9.3 m ³ /min @ 6 Bar
Air Flushing	1.5 cfm	45 liters / min
Water Flushing	10 gal / min	58 liters / min
Optimum Hole Diameter	1 7/8 in to 3 in	48mm to 76mm
Efficient Hole Depth	100 ft @ 1.875 in to 15 ft @ 3 in	30 m @ 48 mm to 5 m @ 76 mm
Drill Steel Size	R32 (1.25 in) R38 T38 (1.5 in)	R32 (32 mm) R38 T38 (38 mm)
Hose Sizes	Air 1.5 in Water 0.75 in	Air 57 mm Water 19 mm
Shank Size	1.5 in x 1.5 in lugged chuck	38 mm x 38 mm lugged chuck

BBC120 Rock Drill Parts

Ref	Qt'ty	Part no.	Description	Ref	Qt'ty	Part no.	Description
1	1	3161 0230	Front Head Cap	22	1	3141 0090	Valve Box
2	1	3161 0993	Lock Spring	23	8	3161 0525	Damper
3	1	3161 0215	Spacer	24	8	3115 0774	Pawl Spring
4	1	3161 0216	Chuck Jaw	25	8	3141 0083	Pawl Plunger
5	1	3161 0231	Front Head	26	8	3161 0370	Pawl
6	1	3161 0218	Chuck Bushing 1 1/2"	27	1	3161 0369	Rifle Bar
6a		3161 0226	Chuck Bushing 1 1/4"	28	1	3161 0070	Air Inlet
7	1	3161 0375 80	Rotation Chuck Assembly	29	1	3000 9922	Inlet Nut
		3161 0375	Rotation Chuck Bare	30	1	9000 0485	Spud
		3161 0329	Chuck Nut	31	1	3161 0377	Ratchet Box
		3161 0218	Chuck Bushing	32	1	3161 0378	Deraileur
8	1	3161 0329	Chuck Nut	33	1	9000 0335	Nut
9	2	3141 0071	Side Rod Nut	34	1	9000 0177	Connection
10	2	3141 0072	Side Rod Nut Nut	35	1	3161 0093	Back Head
11	2	0291 1114	Exhaust Nut	36	2	3161 0229	Banjo Fitting
12	1	3115 0122	Exhaust Deflector	37	2	3161 0820	Pressure Screw
13	1	3161 0819 80	Intermediate Piece	38	4	0653 1100	Copper Washer
		3161 0819	Intermediate Piece (Bare)	39	1	3121 0477	Water Tube Seal
		3161 0235	Liner	40	1	3161 0069	Plug
14	1	3161 0235	Liner	41	4	0663 2132	O Ring
15	1	3161 0307 80	Piston Assembly	42	1	3141 0095	Piston
		3161 0307	Piston	43	1	3141 0096	Retainer
16	1	3161 0308	Rifle Nut	44	1	3141 0097	Spring
17	2	3161 0468	Stud	45	1	3141 0098	Plug
18	1	3161 0524 80	Cylinder Assembly	46	1	3161 0376	Water Tube
		3161 0524	Cylinder (Bare)	47	2	3141 0070	Side Rod
		3161 0468	Stud (2 Each)	48	2	3141 0069	Side Rod Nut
19	1	3141 0088	Pin	49	1	3161 0821	Adapter
20	1	3141 0087 81	Valve Plate Assembly	50	1	0663 2124	O Ring
		3141 0087	Valve Plate (Bare)	51	1	3161 0822	Water Inlet Tube
		3141 0088	Pin	52	1	3161 0823	Nut
21	1	3161 0333	Valve				



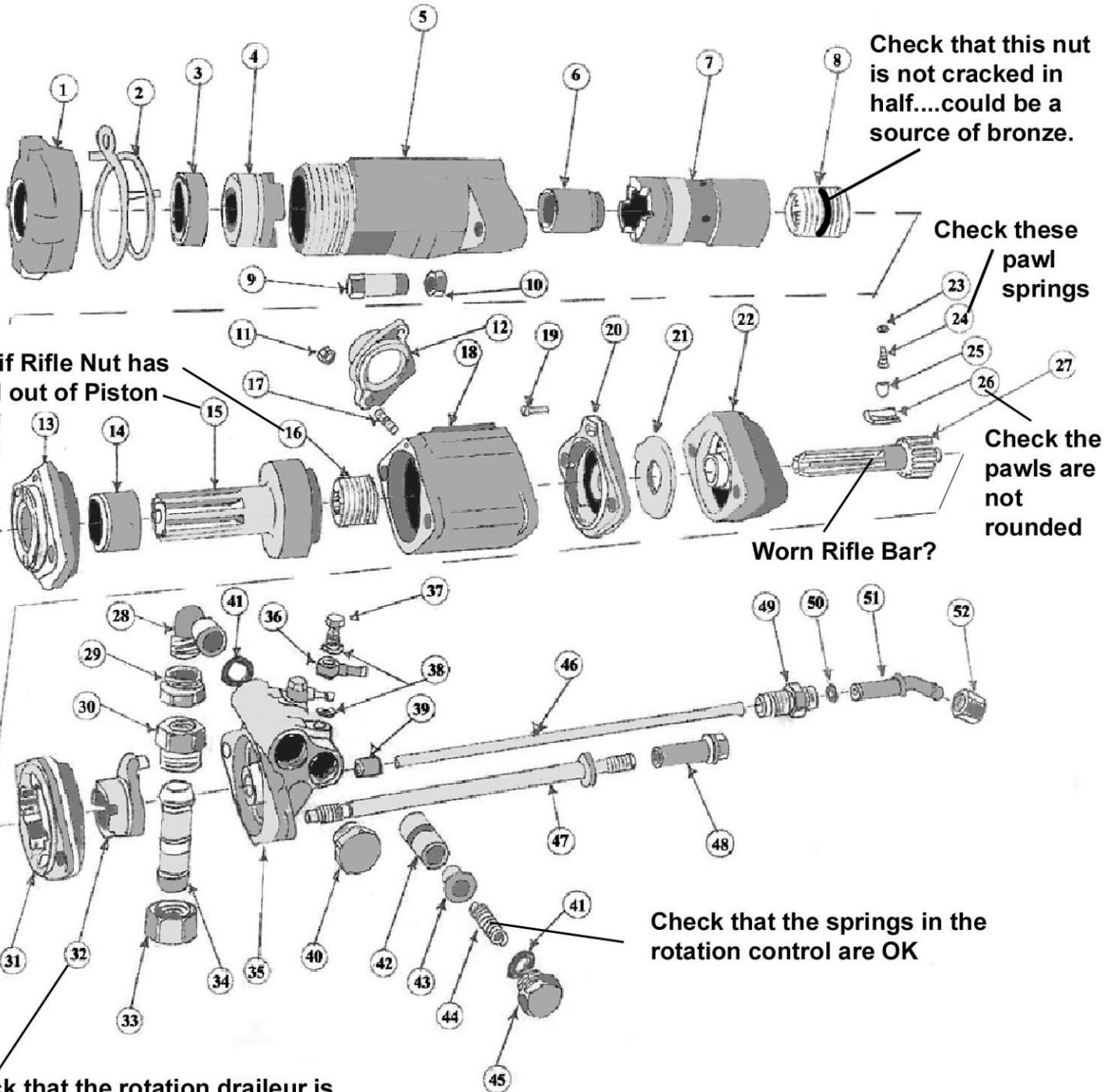
PHQ120F



Rotation Problems CHECKLIST

BBC120 Rockdrill

First check that you have air pressure of 100 psi (7 bar) and minimum volume of 400 cubic feet/sec 175 cubic liter/sec



Check that this nut is not cracked in half....could be a source of bronze.

Check these pawl springs

Check if Rifle Nut has backed out of Piston

Check the pawls are not rounded

Worn Rifle Bar?

Check that the springs in the rotation control are OK

Check that the rotation draieur is working freely with good tension on springs on both sides.

PROBLEMS USUALLY OCCUR WHEN DRILLING IN VERY SOFT ROCK OR CONCRETE.